

ClassicCut™ CL200

Office Desktop A4 Guillotine

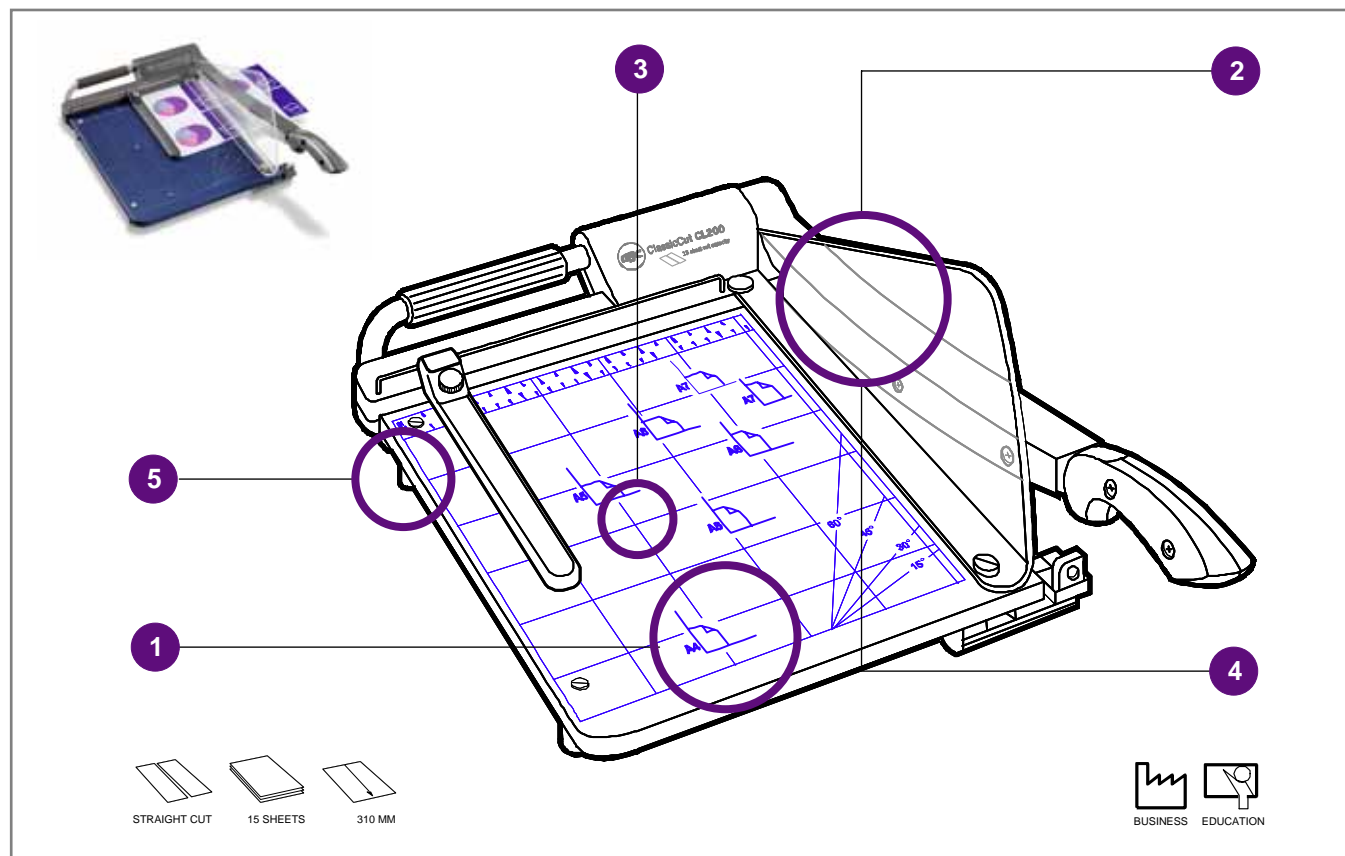
- 310 mm Trim Length
- 15 Sheet (80gsm) Trim Capacity*
- Metric/Inch Rules
- Standard Paper Size & Diagonal Markings
- Safety Guard
- Carrying Handle
- Blade-Lock
- Non-Slip Feet

* Trim Capacity strictly relates to 80 gsm Paper

Ideal for both Home/Hobby and Personal Office use.

Features & Benefits

- 1 Paper Guides – A4, A5, A6 Metric & Inch**
For ease of Paper alignment
- 2 See-Through Safety Guard/Manual Paper Press**
Keeps hands away from Blades yet enables clear view of 'where to trim' and holds paper firmly in place whilst trimming.
- 3 Durable Solid Base**
High quality Solid Base
- 4 Self-Sharpening Stainless Steel Blade**
Longevity of Use
- 5 Large Non-Slip Feet**
Absolute stability on Desk



Technical Specifications

Cutting capacity	15 sheets	Back Stop	Yes
Cutting length	310 mm	Carry handle	Yes
Paper Guides	A4,A5,A6 & A7	Transparent Safety Guard	Yes
Ruler in cm & inches	Yes	Warranty	2 years
Diagonal Lines	Yes	Weights	3.90 Kg
Base Quality	15 mm Heavy Duty blue Base	Working Surface (LxW)	320 x 300 mm
Paper Clamp	Yes	Machine Dimensions (LxWxH)	594 x 335 x 209 mm
Blade Lock	Yes	Safety Approvals	TUV

GBC reserves the right to modify specifications without notice.

Product Code:
CC001210



www.gbceurope.com